

 **capit**®

**ENJOY YOUR
RACE**



ONE ITALIAN PRODUCTION FOR ONE GLOBAL SUCCESS

CAPIT produces its professional tire warmers since 1996 and thanks to the experience, research and test with the best world championship's teams (cars and motorcycles) has come to be one market leader.

This success comes from continuous evolution of products for which our company often has been innovative, introducing new concepts (heat circuit with radial layout, elimination of mechanical thermostats by TNT system), new materials (Fire and Silvertex fabrics) and new technologies (electronic temperature management).

Differently from many others competitors, CAPIT produces in its Italian headquarters and directly manages the study, the development and the implementation of every single product's part: textile, electric and electronic. Chosen materials, the technologies used and the production methods are excellent and therefore guarantee best performance and reliability.

Today our products are sold in many countries in the world: one "made in Italy" production for one "world wide" success.

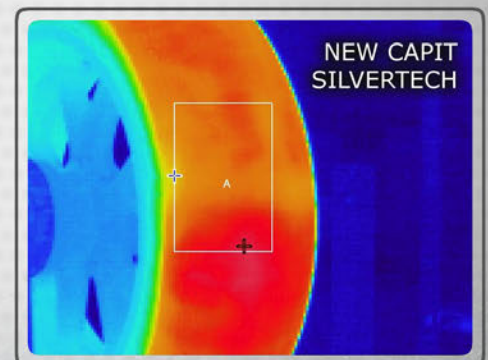
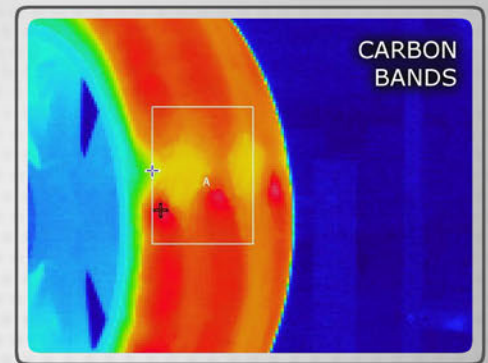
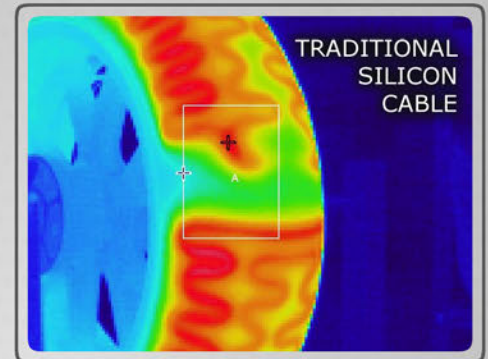
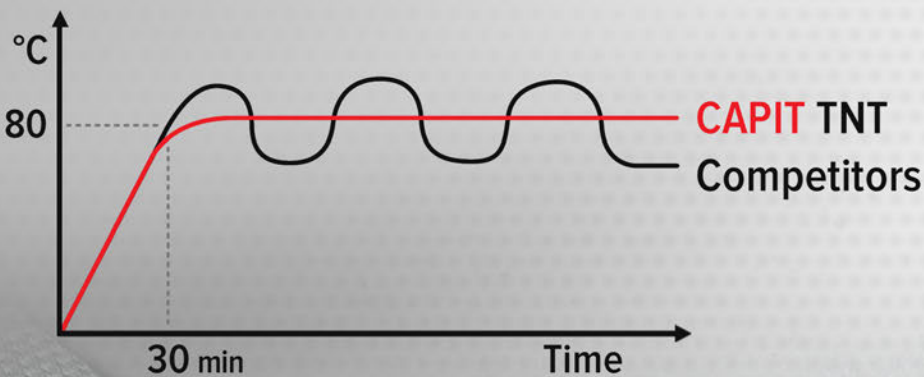


CE 3 YEARS
WARRANTY
100% MADE
IN ITALY

CAPIT formula: DEVELOPMENT + EVOLUTION = INNOVATION

CAPIT during these years has continuously developed its products. By a strict attention we have improved the most critical areas and we have explored new branch to push our limits and our products to the top. The development of materials and manufacturing techniques, with the important evolution of electronics both, has made us innovative. Among the many technical issues we can mention the most important ones:

- **Technology "TNT" self regulated** that does not require the use of traditional thermostat. This allows one durable thermal stability at 85°C that no mechanical thermostat is able to guarantee. The absence of a critical component as the thermostat increases significantly the reliability of our product.
- **SILVERTECH fabric** (internal fabric, highly conductive, based on silver and copper) able to diffuse perfectly the heat and to reduce drastically power consumption thanks to the improved overall thermal efficiency .
- **SPHERICAL shape** of the product that thanks to many pleats (36 per deck) sewn on the outside, ensures perfect adherence of the product to the tire, increasing the performances already very high.
- **DIGITAL management** of temperatures for the highest accuracy and stability by the PID technology. We are one of the few companies able to offer the management of tyrewarmers and their temperatures by one **touch-screen control box** that provides greater performance and offers the possibility to have charts and diagrams of the system.



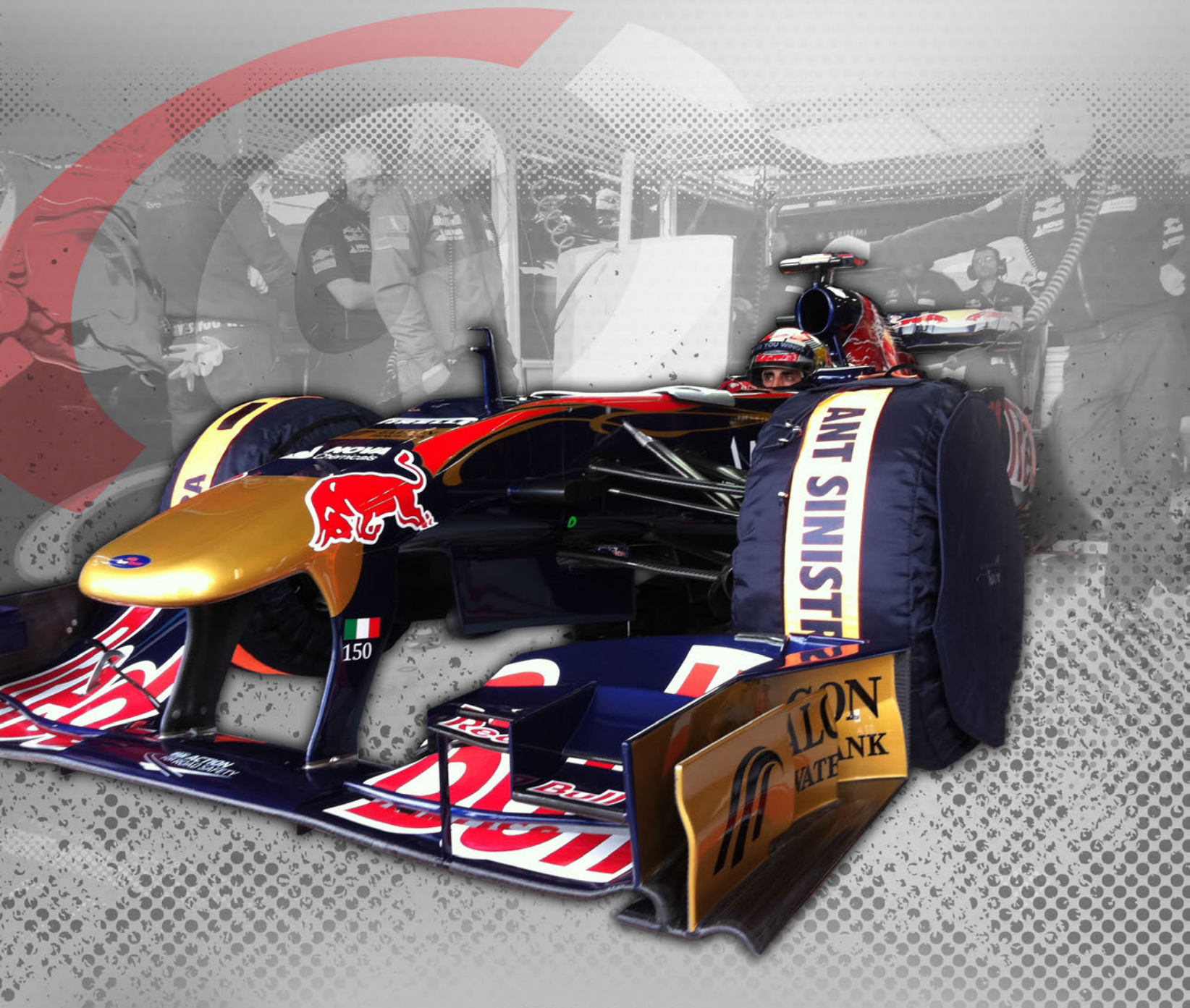


CHOOSE YOUR PRODUCT AND YOUR TEMPERATURE (from 20°C to 110°C and over)

CAPIT produces cars tyrewarmers with excellent technical and aesthetic quality. Our products are used in best championships, including Formula 1, as well as by officials cars and tyre manufacturers for their test team.

Our products are available for all tyre sizes and are available in **SPINA version** (with technology "TNT" self-regulated at 85°C) with 100V or 230V plugs, or in the more professional **LEO version** where you can, using our thermo ecu LEO, choose the desired temperature into a range between 20°C up to 110°C and over. All tyrewarmers are supplied complete with pocket for notes and identification patch (Front left / right and Rear left / right).

Models GT/PROTOTYPE/F1 have colored identifying stripes as standard equipment but you can also request them on other models. It's possible, through personalization and accessories, have a professional product "tailored" (product warranty of 3 years).





SIDE COVER

Product made to ensure the temperature stability on every difficult weather conditions such as cold, strong wind or rain. Have to be used over the tyrewarmers and not as alternative to them. They are used with the four tyrewarmers mounted on the car and like one "hat" when four tires are stored one above the others. Available also with fabric *FIRE* outside and/or with team *LOGO* (read dedicated notes on page 07).

SUPPLIER OF:





TYREWARMERS

Our tyrewarmers are available in **SPINA Version** with direct plug (100V/230VAC) and 85°C fixed temperature or in **LEO Version** with connectors for LEO ecu thermocontroller to adjust-set temperature from 20°C to 110°C and over.

Code	Description	Tyre's Width		Tyre's Circumference		Note
		Front	Rear	Front	Rear	
TWK	Set Tyrewarmers for size Kart	130mm	210mm	880mm	910mm	Only in MAXIMA SPINA version
TWA1_	Set Tyrewarmers for car size formula	180/250mm	240/300mm	1670/1800mm	1770/1850mm	
TWA2_	Set Tyrewarmers for car size Touring/rally	200/270mm	200/270mm	1920/2020mm	1920/2020mm	
TWA3_	Set Tyrewarmers for car size DTM/Superstars	280/305mm	280/305mm	2050/2100mm	2050/2100mm	
TWA4_	Set Tyrewarmers for car size GT	235/285mm	285/330mm	2070/2100mm	2130/2230mm	Identification bands included
TWA5_	Set Tyrewarmers for car size Prototype	340/400mm	370/440mm	2100/2150mm	2170/2250mm	Identification bands included
TWF1L	Set Tyrewarmers for car size Formula one	250mm	320mm	>=2045mm	>=2054mm	Only in MAXIMA LEO version / Identification bands & Silvertech included

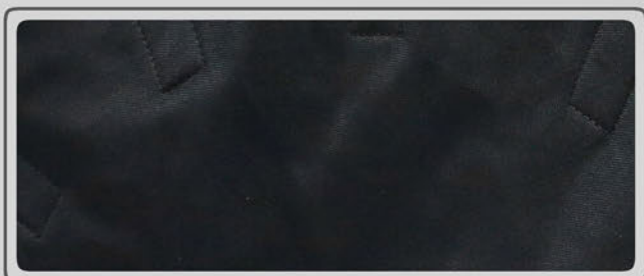


EXTRA CUSTOMIZING OPTIONS

CAPIT offers a range of optional dedicated to its tyrewarmers right to customize them as you want: without unnecessary characteristics and with the specific requested details.



You can choose the exterior color between **6 classic colors** (*): Black, Red, Blue, Green, Yellow and Orange | (*) For free option



You can increase more the heat resistance by the **Fire outer tissue**



You can increase performance requiring **Silvertex** inside the tyrewarmer



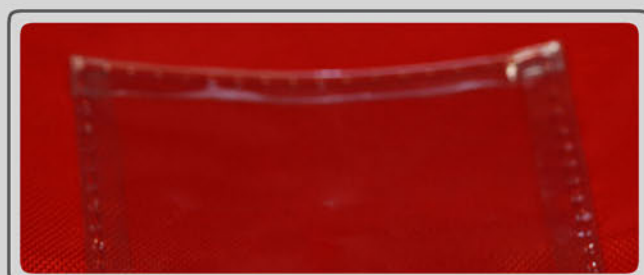
You can require the application of the **Team Logo** or your personal one
(we need vector file format .ai or .eps)



You can choose one of the **special colors** such as: Carbon look, Silver and **special series** like the famous "Stars 'n Stripes" or "Camouflage" version



You can have, on request, **identification bands** [Front left-right / Rear left-right] in different colors (standard on GT/Prototype/F1 models)



You can require the application of **transparent pocket** to insert notes techniques such as the characteristics of the tyre/compound



TECHNICAL PARTNER:



CHOOSE YOUR PRODUCT AND YOUR TEMPERATURE (from 20° to 110°c and over)

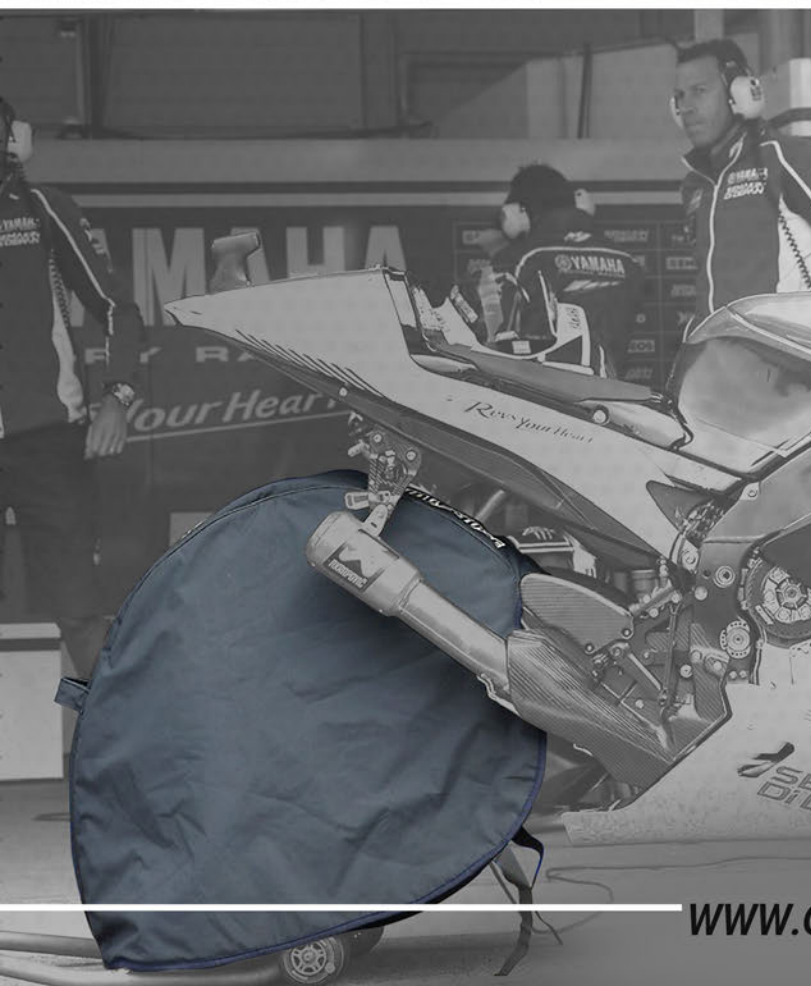
Tyrewarmer for motorcycles is the heart of CAPIT because it was the product with which the company debuted in the motorcycle market.

Our models are a market reference and many professional teams rely on our experience and quality.

Our products are available for all tire sizes and are available in **SPORT and MAXIMA SPINA versions** (powered by "TNT" auto regulated at 85 ° C) with a plug is 100V to 230V, or in the more professional **versions MAXIMA LEO and MAXIMA VISION** where you can set and control the temperature in a range between 20°C up to 110°C and beyond. All the products have 3 years of warranty.



TECHNICAL PARTNER:



capit[®]

VENTOSTOP

Made to ensure the temperature stability in difficult weather conditions such as cold, strong wind or rain, also in contact with hot mechanical parts as brake disc or exhaust collector, they must be mounted over the warmer and not as alternative of them. Available also with fabric FIRE outside and/or with team LOGO (read dedicated notes on page 12).





TECHNICAL PARTNER:



TYREWARMERS TYPE SPORT TNT system at 85°C

It has simple shape but great contents. This model has been designed to offer one practical product that still maintains the efficiency required to use both amateur as well as professional. The quality-price balance is one of the best in the world because in addition to having professional performance for a standard price, reliability and durability over the years are close to the top. The SPORT is made with the innovative and exclusive **"TNT" self-adjusting technology**, without thermostat (read dedicated article on page 03) and it is available in various different sizes (from MINIMOTO to the MOTOGP). 8 colors available, they can be customized with various accessories in our catalog as *Silvertech* and *Fire* fabrics, team logos, data pocket, etc. Made with circuit 100V or 230V and plugs EU, UK, AUS, USA e JP.



YELLOW



ORANGE



RED



GREEN



BLUE



SILVER



BLACK



CARBON

TYREWARMERS TYPE MAXIMA SPINA TNT system at 85°C

It is the excellence. It has all details that the technicians of best team require and appreciate because they are very important. In addition to the side bands designed to radiate heat even on the rim of the wheel, so heat lasts longer, this model is unique for the 36 pleats (18 per side) sewn manually outside right to ensure the *"spherical shape"*, a form useful to copy the profile of the tire, unique to ensure perfect fit of the tyrewarmer to the tire and then heat the letter perfectly. MAXIMA SPINA version is equipped with our **exclusive "TNT" self-adjusting technology** (read dedicated article on page 03), which ensures thermal stability of 85 °C that any thermostat will never be able to match. 8 colors available, they can be customized with various accessories in our catalog as *Silvertech* and *Fire* fabrics, team logos, data pocket, etc. Made with circuit 100V or 230V and plugs EU, UK, AUS, USA e JP.



YELLOW



ORANGE



RED



GREEN



BLUE



SILVER



BLACK



CARBON





TYREWARMERS TYPE MAXIMA LEO from 20°C to 110°C and over

It is the excellence. Equipped with side bands useful to radiate heat to the rim, it is unique thanks to the 36 pleats (18 per side) made to get the "spherical shape" or rather one form useful to copy perfectly the wheel profile and ensure the best fit of the tyrewarmer to the tire. The **MAXIMA LEO version** is designed to work through our electronic control units. By one dedicated connector this tyrewarmer is compatible with our controllers **LEO2 and LEO4**, with racks **MAMMUT EVO** and carries **GRID CADDY EVO**. Through these articles you can view, choose and set the operating temperature of the tyrewarmers. In the standard version the temperature range is 20°C/110°C but you can also have the model that can reach 125°C and more. Available in 8 colors, the product can be customized with various accessories as the tissues *Silvertex* and *Fire*, the team logos, pocket data, etc. Made with circuit for 100V or 230V.



YELLOW



ORANGE



RED



GREEN



BLUE



SILVER



BLACK



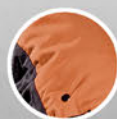
CARBON

TYREWARMERS TYPE MAXIMA VISION from 20°C to 110°C and over

It is the excellence. Equipped with side bands useful to radiate heat to the rim, it is unique thanks to the 36 pleats (18 per side) made to get the "spherical shape" or rather one form useful to copy perfectly the wheel profile and ensure the best fit of the tyrewarmer to the tire. The **VISION type** is equipped with one control unit of ultra-compact size (8mm thickness) integrated directly into the tyrewarmer. This console allows you to view the chosen temperature (T-set) and the current temperature (T-run). It also keeps the part-time (Last time) and the life time (Total time). Available in 8 colors, they can be customized with various accessories as *Silvertex* and *Fire* fabrics, team logos, data pocket, etc. Made with circuit 100V or 230V and plugs EU, UK, AUS, USA e JP.



YELLOW



ORANGE



RED



GREEN



BLUE



SILVER



BLACK



CARBON



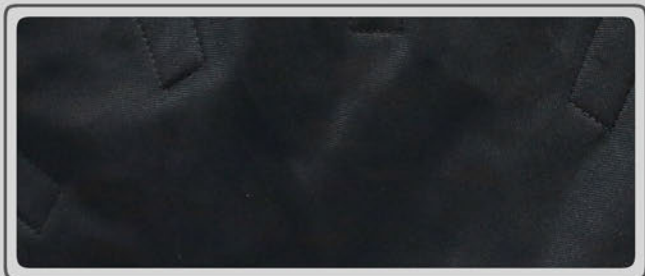


EXTRA CUSTOMIZING OPTIONS

CAPIT offers a range of optional dedicated to its tyrewarmers right to customize them as you want: without unnecessary characteristics and with the specific requested details.



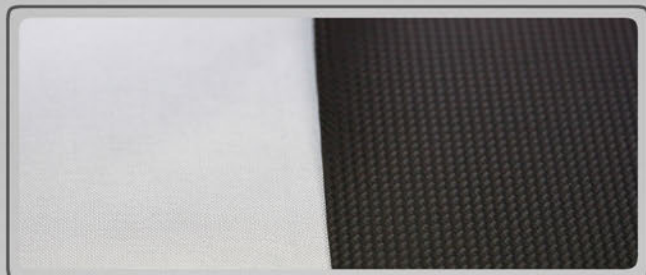
You can choose the exterior color between **6 classic colors** (*): Black, Red, Blue, Green, Yellow and Orange | (*) For free option



You can increase more the heat resistance by the **Fire outer tissue**



You can require the application of **transparent pocket** to insert notes techniques such as the characteristics of the tyre/compound (standard on "Factory")



You can choose one of the **special colors** such as: Carbon look, Silver and **special series** like the famous "Stars 'n Stripes" and "Camouflage" version



You can increase performance requiring **Silvertex** inside the tyrewarmer (standard on "Factory")



You can require the application of the **Team Logo** or your personal one (we need vector file format .ai or .eps)



ECU CONTROL BOX "LEO"

LEO2

ECU to control/manage temperatures of 2 tyrewarmers (1 bike). Compact size and durable frame to have high reliability and avoid obstructions. The displays are hardy and easy to read even in particular light situations. Simple to use, you can set 4 different temperature settings and recall them with a single key ("jump" function very useful during practice or test moment). The unit is supplied with 2 cables 3mt long with connectors for MAXIMA LEO tyrewarmers. In breakage cases we offer display, connectors and cable spare parts.



LEO4

ECU to control/manage temperatures of 4 tyrewarmers (2 bike / 1 car). Compact size and durable frame to have high reliability and avoid obstructions. The displays are hardy and easy to read even in particular light situations. Simple to use, you can set 4 different temperature settings and recall them with a single key ("jump" function very useful during practice or test moment). The unit is supplied with 4 cables 3mt long with connectors for MAXIMA LEO tyrewarmers. In breakage cases we offer display, connectors and cable spare parts.



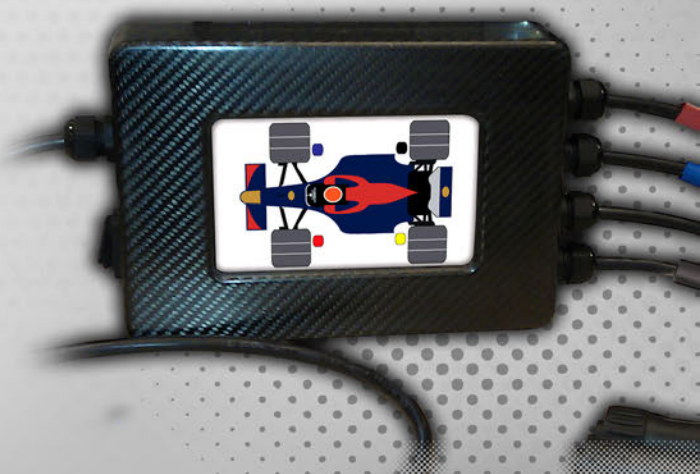
LEO4 TIMER

ECU to control/manage temperatures of 4 tyrewarmers (2 bike / 1 car). Compact size and durable frame to have high reliability and avoid obstructions. The displays are hardy and easy to read even in particular light situations. Simple to use, you can set 4 different temperature settings and recall them with a single key ("jump" function very useful during practice or test moment). The TIMER model is equipped with one display able to control the operation timing of linked tyrewarmers and it is characterized by its lightweight carbon fiber frame. The unit is supplied with 4 cables 3mt long with connectors for MAXIMA LEO tyrewarmers. In breakage cases we offer display, connectors and cable spare parts.



LEO TOUCH

ECU of the latest generation with high potential. It is able to control the temperature of 4 tyrewarmers (2 motorcycles / 1 car) and also handle different temperatures for single warmer with multiple heating circuits (centre and sidewall of each car tyre). The performances are the top thanks to the PID technology which ensures the maximum stability of the set temperature even further to 120°C. The software includes 12 hours of "data recording" and its graphical representation directly on the LCD display. With its advanced hardware and its carbon fiber case, the weight is less than 2 kg. The unit is supplied with 4 cables 3mt long with connectors for MAXIMA LEO tyrewarmers. In breakage cases we offer display, connectors and cable spare parts.



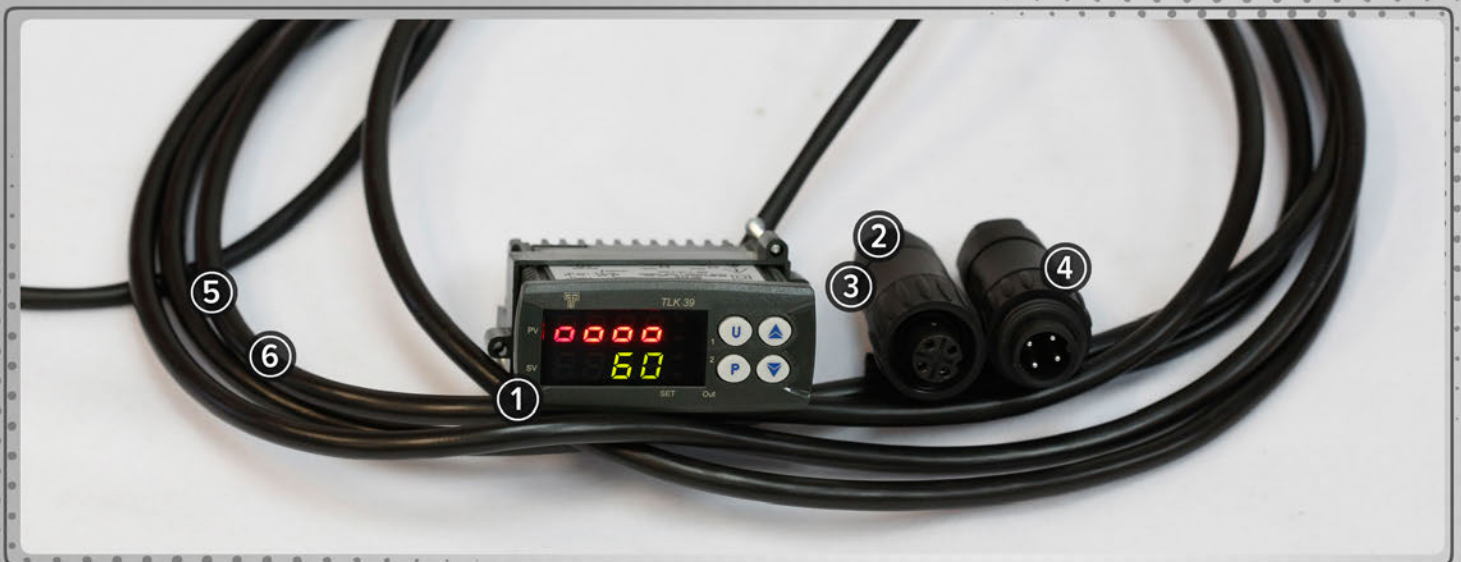


SPARE PARTS

CAPIT is one manufacturer so is able to ensure the care and maintenance of their products, moreover it offers all accessories and spare parts required to do it.

Our company is able to assist its clients not only on the textile side but also on the electrical and electronics areas.

Our customers can request the creation of customized structures based on their design or they can change their existing furnishing autonomy, buying our accessories and spare parts in the catalog.



- ① **WER023**
Single DGT display for ECU LEO2 / LEO4 and MAMMUTH EVO types
- ② **WEC101**
FEMALE CONNECTOR for MAMMUT EVO types
- ③ **WEC102**
FEMALE CONNECTOR for ECU LEO2 / LEO4 cables
- ④ **WEC103**
MALE CONNECTOR for MAXIMA LEO tyrewarmers
- ⑤ **WEC109**
CABLE 3mt for ECU LEO2/LEO4 with female connector only
- ⑥ **WEC111**
CABLE 5mt for ECU LEO2 / LEO4 with female connector only

EXTRA cable 3mt for ECU LEO2 / LEO4 and MAMMUT EVO with male and female connectors

EXTRA cable 5mt for LEO2/LEO4 and MAMMUT EVO with male and female connectors



TECHNICAL PARTNER:



capit[®]



WHEEL-TYRE BAGS

CAPIT has thought one simple and practical product to transport your set of rims/tires easily without damaging them.

The set includes one bag for the front tyre and one bag for the rear tyre with dedicated measures and with double velcro closure to exclude accidental opening. This product is available, on request, with personalized LOGO.

BOX STOOL

This stool is one of the simplest accessories most appreciated by mechanics who work in the paddock. This product contains all the features necessary for its proper use.

The wheels are made of nylon with diameter of 50mm to ensure high strength and excellent sliding. The base has one size 370mm x 350mm to ensure the best stability.

It's equipped with a tray where you can store various objects and even a retractable drawer where you can keep some useful tools.





WHEELS “PADDOCK CARRIER”

This trolley has been developed according all “staff team” instructions. So the material is the aluminum for lightness and rigidity (less than 25kg and 150kg capacity), removing only 8 screws you can disassemble the structure, and its crosses may be required in different lengths depending on personal needs.

The design is studied to ensure the smallest size but also the best stability. The side shoulders are calculated to minimize the possibility to damage the rims or avoid that the technicians crush their hands pushing it. The wheels are in rubberized ABS to have an excellent durability and be able to absorb the roughness of the floor. Their diameter of 125mm allows it to overcome all obstacles in the paddock.

It also have 4 plates useful to be customized with Team logos and fit technical notes about the transported tires. For this carrier are available various options such as: the rims axle holder to clean them; the note folder; rubber covers to avoid rims damaging; the waterproof “CARRIER COVER” in different colors and customizable.

STARTING GRID CARRIER “GRID CADDY”

CAPIT designed this product as a “portable MAMMUTH”. On the starting grid and in some small paddock-box, the use of our racks is not easy or even impossible. So thanks to our GRID CADDY you will have the opportunity to use and manage from 2 to 4 tyrewarmers (2 motorcycles / 1 car).

All the electrical and electronics parts are integrated . Only the power plug is external so it can be connected to the generator when you are on the grid or to the electric circuit network when you are into the garage. The frame is made of lightweight aluminum (less than 10kg), can be disassembled in few minutes removing only 6 screws and can be closed into a minimum space (1.506 x h.1020 x d.210).

- ① The versions **SPINA2** (1 bike set) and **SPINA4** (2 bike sets or 1 car set) manage our tyrewarmers model SPORT, MAXIMA SPINA and MAXIMA VISION.
- ② The versions **EVO2** (1 bike set) and **EVO4** (2 bike sets or 1 car set) manage our tyrewarmers model MAXIMA LEO.



RIMS-WHEELS RACK “MAMMUTH” (SPINA or EVO)

CAPIT designed this product for race activities of teams who use tyrewarmers. This product grants the best housing of rims and the best tyre management of heating process and heat retention. They are made in aluminum and are divisible just to be light and occupy minimum volume during transport.

Strong and reliable, they have great advantage to have all electric wires and electronic (EVO) integrated, making them invisible, right to reduce annoying and dangerous hitch in the box during the frenetic activity of the mechanics. The product is supplied with pivots wheel included.

- ① The Mammut **SPINA version** is equipped with electrical outlet type CE standard (UK, AUS, USA, JAP types available on request) to power our tyrewarmers SPORT, MAXIMA SPINA and MAXIMA VISION.
- ② The Mammoth **EVO version** is dedicated to our tyrewarmers MAXIMA LEO and it integrates the electronics and the components of our ECU LEO2/LEO4. Practicality, efficiency and savings in a single product.

MAMMUT DIMENSIONS TAB

Aluminium rims-wheel rack

	A	B	C	Kg
Mammut 4 EVO/SPINA **	870mm	1320mm	540mm	8
Mammut 8 EVO/SPINA *	1290mm	1320mm	540mm	16
Mammut 10 EVO/SPINA *	1600mm	1320mm	540mm	20
Mammut 12 EVO/SPINA *	1910mm	1320mm	540mm	24
Mammut 12 Moto3 EVO/SPINA *	1600mm	1320mm	540mm	20

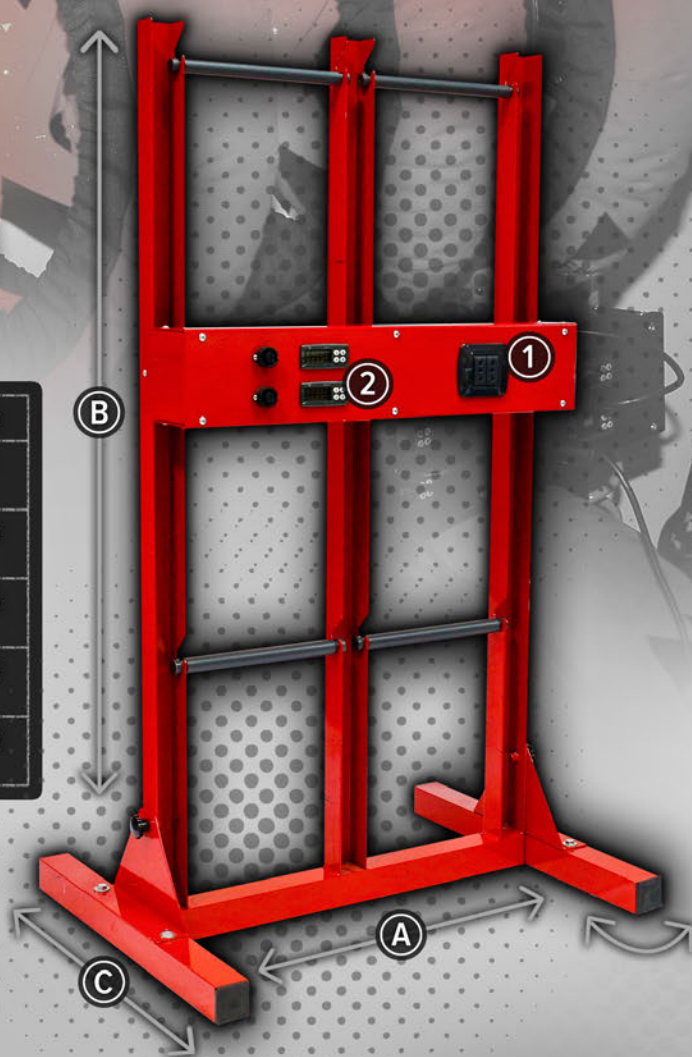
** fixed standing bases / * folding standing bases

Pivot wheels diameter (included):

Front Ø20mm | Rear Ø24mm

Power cable (2mt):

100-230V with blue industrial plug





TECHNICAL PARTNER:



WARMME

Wellness "on demand" at 360°

During cold periods, often we are dressed improperly respect to temperature and activity performed. With WARMME today you can feel better, you can decide the best temperature depending on the activity or the environment in which you are, whatever type it is.

Built with Soft Shell fabric, it is thin, retains heat but is breathable and it is water-proof/wind-block. Studied to be worn under any jacket or coat (but as outwear too), adapts to the different clothing used, WARMME is perfect for work, sport, hobbies and all outdoor activities.

Details are the difference:

- One invisible circuit with flexible and ultra-flat hotplates
- One single "Easy touch" button (to be used without taking off gloves) to select one of the 3 temperatures available
- Lithium-ion battery smaller, lighter and rechargeable quickly
- Double side zip for a perfect fit to the body always
- Zip pullers and "easy open" flaps on double inside pockets



WPA415
Rechargeable lithium-ion battery (spare)

WPA420
12V plug car battery charger



WPA425
100V battery charger

THE DRY HELMET

This item has been designed to solve really and effectively one of the most annoying problems for riders: dry the helmet.

In cold seasons, but even when the heat is very humid, the sweat of the helmet does not dry out, thus creating problems of comfort, fogging of the visor or worse, sweat drops into the eyes.

With the function "hot air" the DRY HELMET is able to dry the inside of the helmet in a few minutes and without leaving annoying scent (the "cold air" keeps the helmet ventilated and cool).

The product is designed to dry the helmet without changing its security elements (inside and padding).
Available both for 230V and 100V.





CAPIT PERFORMANCE SRL

Via Newton, 12 - 20016 Pero (MI) - Italy

Tel: +39 02.3533300 | Fax: +39 02.33913538

Web: www.capit.it

Email: info@capit.it

Facebook: www.facebook.com/capitperformance